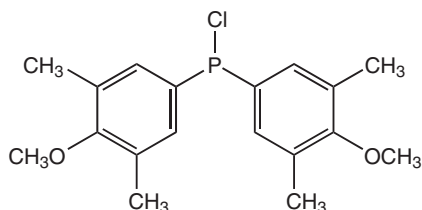


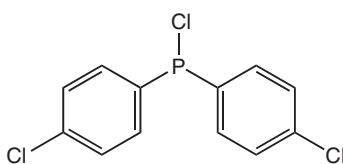
Chlorophosphines

Ligands containing a trivalent phosphorus moiety are found in many catalytic systems.¹ Chlorophosphines provide a convenient route to introduce phosphorus into the ligand structure. Alfa Aesar offers a range of chlorophosphines to enable chemists to fine tune the properties of their catalysts.



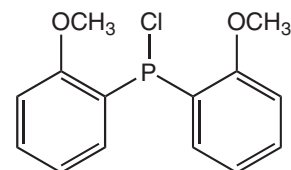
H25884

Chlorobis(3,5-dimethyl-4-methoxyphenyl)phosphine, 98+%
[136802-85-2]



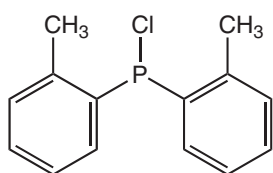
H25886

Chlorobis(4-chlorophenyl)phosphine, 98+%
[13685-26-2]



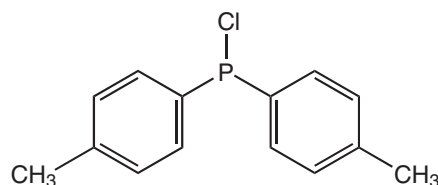
H25894

Chlorobis(2-methoxyphenyl)phosphine, 98+%
[263369-88-6]



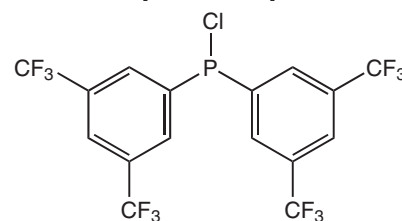
H25890

Chlorodi(o-tolyl)phosphine, 98%
[36042-94-1]



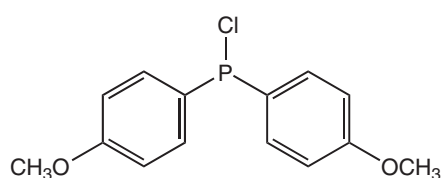
H25889

Chlorodi(p-tolyl)phosphine, 95%
[1019-71-2]



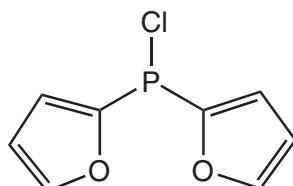
H25883

Chlorobis[3,5-bis(trifluoromethyl)phenyl]phosphine, 98+%
[142421-57-6]



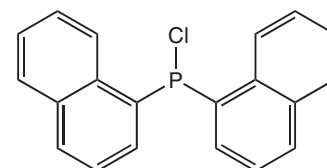
H25887

Chlorobis(4-methoxyphenyl)phosphine, 98+%
[13685-30-8]



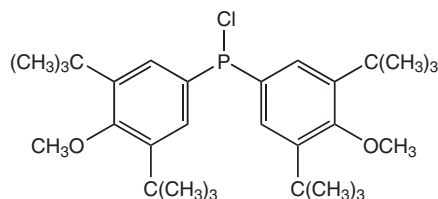
H25892

Chlorodi(2-furyl)phosphine, 98+%
[181257-35-2]



H25893

Chlorodi(1-naphthyl)phosphine, 95%
[36042-99-6]



H25882

Bis(3,5-di-tert-butyl-4-methoxyphenyl)chlorophosphine, 94%
[212713-08-1]